

CHAPTER NINE: HARNESSING TORSION WAVES AND CONSCIOUSNESS (from The Divine Cosmos)

RUSSIAN AND UKRANIAN PYRAMID RESEARCH

Grebennikov's discoveries with the "cavity structural effect" show that long, tubelike structures, especially if gathered in bundles, will harness torsion waves in a way that can be confusing and damaging to most forms of life. However, he also found that if such structures are placed *above* a person, such as in a specially-built chair that he designed, the added torsion energy that they draw up from the earth has beneficial health properties. Such devices can be built rather simply by gluing several large egg crates above each other at their mutually shared points and mounting them above a chair where a person will sit.

The beneficial health effects of a person being placed under a CSE generator can be duplicated and enhanced with the pyramid shape. Grebennikov did a certain degree of interesting research in this area, but until Dr. John DeSalvo of the *Giza Pyramid Research Association* published the Russian and Ukranian pyramid research of A. Golod, V. Krasnoholovets and associates, the complete picture of how much progress had been made in these areas was not available online. This research comes from the *Institute of Physics* in Kiev, Ukraine, a basic institution of the *National Academy of Sciences* of Ukraine, which was one of the leading scientific centers in the former USSR and the premier military research association.

Two steep pyramids with 70-degree slope angles were constructed in Russia near Moscow, one at a height of 22 meters and another at a height of 44 meters [144 feet,] costing over a million dollars to build. Over the last 10 years, a total of 17 different pyramids have been built altogether. **In order for the pyramid effects to emerge, it was found that *no metal* could be used in the construction of these structures,** thus modular fiberglass plastics were used instead. The pyramids were **aligned to the North Star** and built away from populated areas in the natural countryside. At the base of the 22-meter pyramid, the fiberglass wall was 36 centimeters thick, and at the base of the 44-meter pyramid the fiberglass wall was 70 centimeters thick. The 22-meter pyramid weighed a total of 25 tons and the 44-meter pyramid weighed a total of 55 tons. Several different teams from the Russian Academy of Sciences carried out all sorts of experiments in these pyramids, with surprising results. [These results are discussed in greater scientific detail in the article, referenced at the end of this chapter.]

9.7.1 STRENGTHENING OF ANTI-VIRAL MEDICINE

The first study cited in Dr. Krasnoholovets' summary paper is by Prof. S.M. Klimenko and D.N. Nosik, MD from the *Ivanovskii R&D Institute of Virology* within the *Russian Academy of Medical Science*. This study involved the drug venoglobulin, which is a naturally-occurring antiviral compound in human beings. When the drug was diluted into a concentration of 50 micrograms per milliliter and stored in the pyramid for a time, it then became approximately *three times more effective at fighting viruses* than it normally would.

9.7.2 STRENGTHENING OF HEALING BENEFITS OF GLUCOSE AND WATER

The team of Prof. A.G. Antonov from the *Russian R&D Institute of Pediatrics, Obstetrics and Gynecology* tested the effects of a solution of 40% glucose in distilled water after it had been stored in the pyramid. By administering only 1 milliliter of the glucose to 20 different prematurely born infant patients with compromised immune systems, their levels of health were seen to rapidly increase up to practically normal values. The researchers furthermore discovered that the glucose was not necessary, as **the same effect could be produced by simply using 1 milliliter of ordinary water that had been stored in the pyramid**.

9.7.3 INCREASED HEALING RESPONSE FOR ORGANISMS WITHIN PYRAMID

Another study was performed by Dr. N.B. Egorova at the *Mechnikov R&D Institute* within the *Russian Academy of Medical Science*. In this study, the torsion-wave harnessing capability of the pyramid was tested directly on living organisms placed inside. An experimental and a control group of white underbred mice weighing 12 to 14 grams were both tainted with strain 415 of the virus S.typhimurium in equal amounts over the course of one day. In smaller doses of contamination, the mice stored in the pyramid survived at a rate of 60% whereas only 7% survived in the control group. In larger doses of contamination, 30% of the mice in the pyramid survived as opposed to only 3% in the control group. In other experiments, mice were exposed to various carcinogens, and an experimental group drank water from the pyramid whereas the control group drank ordinary water. **The mice drinking the pyramid water had significantly fewer tumors develop than the mice drinking the ordinary water.**

9.7.4 CHANGES OF ELECTRICAL RESISTANCE OF MATERIALS IN PYRAMID

Prof. V.I. Kostikov and Dr. A.C. Katasonov from the R&D Institute "*Graphite*" within the *Russian Academy of Sciences* performed various studies on the

changes in electrical resistance that can be induced by a pyramid structure. In one example, a pyrocarbon material was tested that normally had a resistance of 5 to 7 micro-ohms. After a one-day stay in the pyramid, the material became 200% more resistant to electric current, which is an abnormal effect for pyrocarbon. Irradiating the same material with $\sim 10^{19}$ neutrons per square meter would only change the resistance of the pyrocarbon by about 5% in comparison. Similarly, silicon semiconductors would have an exponential lowering of their electrical resistance, moving from 10^5 to 10^4 ohms per centimeter, and high-temperature superconducting materials would lose their superconductive properties after a one-day stay in the pyramid.

9.7.5 ROCKS FROM PYRAMID DISTRIBUTE ELECTRICAL CHARGES MORE EVENLY

A group of researchers from the *All-Russian Electrotechnical Institute* in Moscow conducted an experiment to demonstrate how pyramid-charged rocks could dissipate strong electric charges, rendering them less harmful. The setup involved a flat metallic plate that was zapped by positively-charged electric blasts at up to 1400 kilovolts in intervals between 250 and 2500 microseconds. The electric blasts were generated by a rod that was suspended 5 meters above the metallic plate. Each of these blasts will typically “discharge” and burn up a portion of the metallic plate, which is known as a “defeat,” and these defeats are logged and plotted.

Two identical systems of this type, an experimental and a control, were created. In the experimental system, seven 100-gram chunks of granite that had been stored inside the pyramid were then placed on the flat plate in a one-meter wide ring. The researchers discovered that *there were five times more burn marks on the control plate as opposed to the experimental plate*. Obviously, normal granite rocks would not produce such an effect – only those that have stayed in the pyramid. It seems that **the rocks exposed to the torsion fields in the pyramid were much more capable of distributing the electrical charges**. This appears to be due to the fact that **the electron clouds of the atoms in the rocks became more uniformly spin-polarized in the pyramid, thus helping to absorb and spread out electrical charges more evenly**.

9.7.6 A.A. GOLOD’S PYRAMID EXPERIMENTS

Five major categories of experiments, as follows, were performed by a team of researchers from the *Scientific Manufacturing Union Gidrometpribor* in Russia, directed by A.A. Golod.

9.7.6.1 WATER DOES NOT FREEZE IN THE PYRAMID UNLESS DISTURBED

In the first experiment, plastic bottles of distilled water were kept in the pyramid over the course of three winter months. During this time, the air temperature in the pyramid sank as low as -38°C , or -6°F . **Thermometers inside the bottles revealed that the temperature of the water was the same as the below-freezing air temperatures surrounding them, yet *the water remained in a liquid form and would not turn into ice!*** However, **if the water in any of the bottles was shaken or bumped in any way, it would immediately start crystallizing and quickly turn into a block of ice.** Golod and his associates have videotaped these results.

This first experiment obviously suggests that the presence of the torsion -wave energy was able to keep the water molecules from crystallizing into ice, yet a simple disruption in the harmonic stillness of the water would cause this equilibrium to disappear and ice would quickly form. One slight bump on the edge of the bottle would disrupt the even flow of the torsion radiation and allow the molecules to begin crystallizing.

This same experiment also showed that **water would retain its purity indefinitely while within the pyramid.**

9.7.6.2 VISIBLE RINGS FORM IN ROCKS SCATTERED INSIDE THE PYRAMID

In the second of Golod's experiments, chunks of granite and crystal were scattered along the floor of the pyramid for longer periods of time. A visible ring would appear evenly throughout the chunks, showing a clear change in the appearance of the stones when under the torsion-wave influence. Between the end of 1997 and the beginning of 1999, this result was able to be duplicated 40 different times in the same pyramid, with different rocks each time. Each ring would cover between 50 and 300 rocks, with a total weight from 20 to 200 kilograms. Golod et al. have gathered evidence to suggest that when the rings form most visibly, the amount of epidemics in the surrounding area will decrease.

9.7.6.3 A COLUMN OF "UNKNOWN ENERGY" APPEARS ABOVE THE PYRAMID

In the third of Golod's experiments, the Joint-stock company "*R&D Institute TTR*" conducted studies of the air above the pyramid with a Russian instrument similar to radar known as a "military locator." **A column of "unknown energy" was detected at a width of 500 meters and a height of 2000 meters.** Further

studies confirmed that **a larger circle of this energy surrounded the area above the pyramid in a 300-kilometer-wide range, with the highest concentration being directly above the vertical fulcrum of the pyramid**. Golod's team calculated that if such an energy column were to be produced electromagnetically, it would require all the energy of the various power plants in Russia combined. Furthermore, less rigorous was the observation that **after the pyramid's presence was established, an ozone hole that had existed over that area of Russia was seen to repair itself in only two months' time**.

This column of unseen energy did have other immediate uses and effects as well. **Electrical energy from the pyramid could be harnessed by a capacitor that was placed at the apex of the pyramid; the capacitor would spontaneously take on a charge**. Furthermore, pieces of the capacitor assembly were seen to break away and rise into the air on the energetic column that the pyramid was producing. It was also discovered **that people working near the top of the pyramid might start to experience dizziness and nausea, and need to be taken some distance away from the pyramid for these effects to subside**.

9.7.6.4 OIL WELLS BECOME MORE PRODUCTIVE WITH PYRAMIDS ABOVE THEM

In Golod's fourth experiment, a series of pyramids were built over one of a number of oil wells. It was discovered that ***the viscosity of the oil under the pyramids decreased by 30%, while the production rate accordingly increased by 30%*** compared to the surrounding wells. **There was a decrease in the amount of unwanted materials in the oil, such as gums, pyrobitumen and paraffin**. These results were confirmed by the *Gubkin Moscow Academy of Oil and Gas*.

9.7.6.5 AGRICULTURAL SEEDS INCREASE THEIR YIELD

In Golod's fifth experiment, agricultural seeds were **kept in a pyramid for 1 to 5 days before being planted**. More than 20 different seed varieties were planted across tens of thousands of hectares. In all cases, **the seeds from the pyramid had a 20 to 100-percent increase in their yield; the plants did not get sick and they were not affected by droughts**.

9.7.6.6 ADDITIONAL PYRAMID EFFECTS RELATED TO BIOLOGY AND HEALTH

Under less strenuous laboratory conditions, Golod's team determined the following:

- a. Poisons and other toxins become less destructive to living systems after even a short term of exposure in the pyramid.
- b. **Radioactive materials held inside a pyramid would decay more rapidly than expected.**
- c. Pathogenic viruses and bacteria become significantly less damaging to life after being held in the pyramid.
- d. **Psychotropic drugs have less of an effect on people either staying inside a pyramid or within close range of a pyramid.**
- e. Standard solutions such as glucose and iso-osmotic solution become effective for treating alcoholism and drug addiction after being placed in the pyramid. They can be administered either intravenously or outwardly.

9.7.7 PYRAMID STUDIES OF DR. YURI BOGDANOV

Dr. Yuri Bogdanov conducted pyramid studies on behalf of the Joint-stock Company, “*Scientific and Technological Institute of Transcription, Translation and Replication*” (TTR), in Kharkiv, Ukraine. In one experiment, **a 12-meter pyramid was used to increase the productivity of wheat by 400%** in the Ramenskoe settlement of Moscow. The following effects were also discovered:

- a. The half-life of radioactive carbon was altered;
- b. **The crystallization patterns of salts would change;**
- c. Concrete would change in its strength;
- d. Crystals would exhibit different optical behaviors.

In the biological arena, **rabbits and white rats exposed to the pyramid gained 200% more endurance and their blood gained a higher concentration of leukocytes, or white blood cells.**

9.7.7.1 WATER PURIFICATION BY PYRAMID POWER

Dr. Bogdanov also built a complex of pyramids in a town near the Arkhangelsk region of Russia by order of the domestic administration there. In this case, **strontium and heavy metals that had contaminated a well were able to be cleared by the effects of the pyramids**, similar to how unwanted materials were filtered out of oil in the above example. In the town of Krasnogorskoe near Moscow, **a pyramid was constructed that would reduce the amount of salt in water, again making it more drinkable.**

In addition, Dr. Bogdanov performed many laboratory studies on medicinal preparations, fungi and so forth. In the city of Kiev, Dr. Bogdanov studied how matter interacts with different torsion-field patterns created by various pyramid shapes, and these investigations also studied how the consciousness of the

person would affect these energy fields. These studies were performed by a torsion-wave detecting device that he named the “*Tesey*,” which allows its user to detect peculiar properties in a particular geological feature, energetic “breathing” activity in the Earth as well as the torsion effects of various buildings including pyramids. These results were discussed on the *Conference on Problems of Harmonization of Mankind*, held in Kiev, and were subsequently published.

9.7.8 INCREASED HARDNESS AND PURITY OF SYNTHESIZED CRYSTALS

The torsion-wave-focusing properties of the pyramid structure were seen to have a direct effect on how crystallization takes place. Diamonds that were synthesized within the pyramid turned out harder and purer than they would otherwise. Again, this suggests **that the torsion-wave component is of central importance in the forming of chemical bonds to create a crystal**.

9.7.9 DIMINISHED SEISMIC AND WEATHER ACTIVITY

Teams from the *Russian National Academy of Sciences* also studied the earthquake data from the areas surrounding the pyramids and compared it to earlier data before the pyramids were built. They discovered that **the pyramids have the ability to dissipate the energetic buildup that would normally create sudden, violent earthquakes**. Instead of seeing one large and powerful quake, several hundred tiny earthquakes are registered instead. Furthermore, **the atmosphere surrounding the pyramid seems to be shielded from severe weather as well, causing an overall decrease in the amount of violent weather patterns**. This gives a clear illustration of the usefulness of pyramids for balancing the aetheric energies streaming into a planet.

9.7.10 FOODS STORED IN PYRAMID INCREASE HUMAN COMPASSION

Another experiment was conducted where a quantity of **salt and pepper** was stored inside the pyramid. This salt and pepper was later removed and fed continually to about 5000 people in different jails in Russia. Amazingly, within a few months there was **a dramatic improvement in their behavior, and most criminal behavior almost completely disappeared**. This is one of the more important points, as it validates the idea that aetheric energy is “spiritual energy” and that **as a person is exposed to higher intensities of it, there is a propensity for greater feelings of love and compassion for others**.

9.7.11 LIGHT-PRODUCING EFFECTS AND RAZOR -BLADE SHARPENING

Dr. Krasnoholovets built a small and simple resonator to study these pyramid effects, which appears to have been a piece of cardboard or glass folded in half to form a small “roof” structure. Within this small resonator, a KIO₃*HIO₃ crystal experienced a greater clustering of hydrogen atoms in the crystal. Rare gases and the surface of metals were also seen to have a photoelectric effect while in the resonator, meaning that they were producing light. [This seems to explain why the large outdoor pyramids could not involve metal in their construction.] Furthermore, Dr. Krasnoholovets replicated Patrick Flanagan’s historic “pyramid power” experiments by studying the effects on a razor blade within this resonator. **The blade was aligned east to west, perpendicular to the Earth’s magnetic field,** while a piece of the edge was removed and stored away from the resonator. **Under scanning electron microscope, the edge of the razor blade from the resonator was seen to take on a smoother, less angular form over time.**

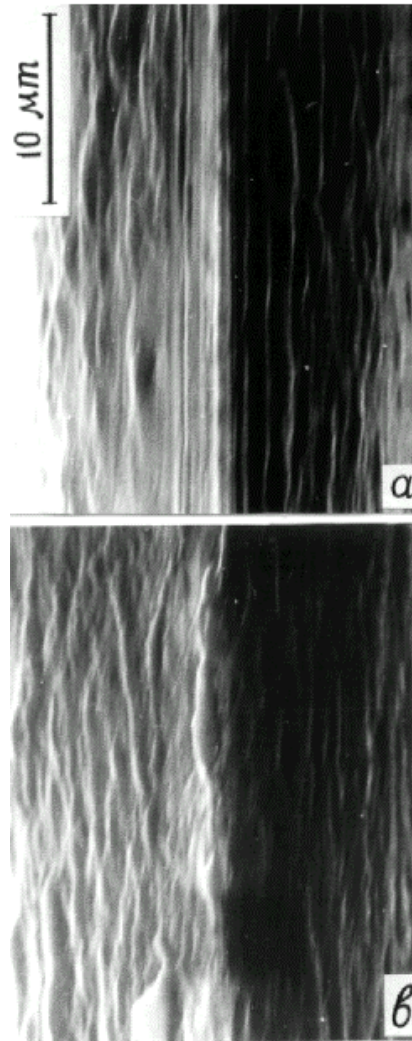


Figure 4 (3000x magnification)

Figure 9.4 – Normal razor surface (a) and razor surface after resonator exposure (b) under 3000x magnification

.8 HYPERSPACE PHYSICS OF JOE PARR

Dr. John DeSalvo of the *Giza Pyramid Research Association* has also brought the pyramid research of Joe Parr to the world's attention through his various media appearances such as on the Laura Lee Show and Jeff Rense. Joe Parr holds a law degree and also has over 40 years experience as an electronics engineer. Parr's interest in pyramid research first came about from his meeting George Van Tassel, an early contactee, in the 1950s, who informed him about the "pyramid power" experiments of Pat Flanagan that had demonstrated the sharpening of razor blades in the pyramid structure. Other experiments showed that **organic materials would naturally dehydrate without putrefying while inside a pyramidal structure. Even raw, unrefrigerated milk would keep from spoiling if properly positioned.**

9.8.1 STATIONARY PYRAMID RESEARCH

Parr went on to begin studying pyramid-related phenomena, first by simply using stationary pyramids and taking measurements from them. **These pyramids could be made of nothing more than four horizontal rods forming a base and four vertical rods forming the edges.** He would then place sources of radio waves, magnetic fields, ion sources and radioactive sources inside the pyramids, and measure their strength outside the pyramids. From this study, he found that **a spherical energy field surrounds any pyramid structure.** The exact center of this orb corresponds to the Queen's Chamber position in the Great Pyramid of Giza. **Inside this "orb," the strength of the electromagnetic or radioactive source that he placed inside will still be measured at its full potential, but areas outside the orb will have a 1 to 3 percent reduction in the amount of measurable energy.**

9.8.2 VARIANCE WITH SOLAR, LUNAR AND OTHER CYCLES

After 13 years of studying this phenomenon, Parr found that a negative ion generator (air ionizer) would strengthen the orb, causing it to shield and hold in even more energy than before. **Specific sound frequencies such as 51.5 hertz could also be used to strengthen the orb.** Over the course of 20 years of measurements, Parr determined that **the strength of this energy orb varies with the common 11-year sunspot cycle, and the width of the orb expands and contracts with the phases of the moon.** All of these observations again suggest that the spherical orb is a static torsion field that gathers around the pyramid, and is strengthened by absorbing dynamic torsion fields. These fields can be strengthened by the electrostatic energy in the ions or in the acoustic vibration of air, which also is a vibration of the aether. **Solar and lunar activity also has a direct impact on the strength of dynamic torsion energy streaming into the earth.**

9.8.3 IMPORTANCE OF "PHI" CYCLE OF TIME

Further analysis determined that the classic "phi" ratio was very important to these energy fields as well, *again* showing a clear connection to torsion fields. Parr found that a form of "virtual" clock would begin counting at the time that the pyramid was first set in a certain position. This means that **once the pyramid was placed in a fixed spot, the orb surrounding the pyramid would gradually become stronger and stronger in its ability to contain the energy fields inside, and the rate of growth for the energy bubble was directly proportional to "phi".** **At certain mathematically-defined points in this "phi" cycle, the bubble will expand and contract in size, outside of the effect caused by the moon.** This suggests a slow, long-term harmonic "wobble" in the energy field, reverberating like a gong in synchrony with the phi-proportions of the instreaming torsion waves.

9.8.4 ENERGY FROM GALACTIC CENTER

Parr's experiments were abruptly disturbed on December 4, 1979, when the spherical energy orbs around the pyramids started rapidly disappearing on all but one experiment for an unknown reason. This caused the electromagnetic and radioactive sources inside the pyramids to suddenly flow without interruption into the surrounding space. Years later, Parr was very surprised to find out that *the stream of X-rays from the center of our galaxy had abruptly shut off that day*, and the anomaly was widely noted by astronomers. Other pyramid-energy shutdown events documented by Parr also corresponded precisely with drop-offs in our galaxy's X-ray emissions, though he was unaware of this connection at the time the measurements were made.

This is another valuable piece of data, as it shows us that *the center of the galaxy is actually our primary source of instreaming torsion wave energy*. In this case, *the torsion waves appear to be propagating in tandem with the X-ray wavelengths of the electromagnetic energy spectrum*. Even though the activity of the Sun can increase or decrease the strength of torsion waves coming into the Earth, *without the input from the Galactic Center we will have much less energy available to us*. This will prove to be a very important point that we will use to explain the importance of the Mayan Calendar end-date on Dec. 21, 2012.

About nine days after Dec. 4, 1979, the spherical energy fields started to return, yet all but one pyramid had lost the original energy strength of the orb, which had slowly accumulated over time according to the "virtual clock" of the phi radio. The only pyramid that did *not* lose its energy field throughout this entire time period was a pyramid that was *rotating* by a mere 5 degrees every 10 days. As Parr allowed this particular experiment to continue running, he found that the strength of its energetic orb continued increasing, eventually surpassing all of his other stationary pyramids. As we now know, *the slight rotation caused the pyramid to absorb a small but measurable amount of torsion waves that would otherwise be traveling straight down and / or straight up with the gravitational field*.

9.8.5 IMPORTANCE OF ROTATION IN ENERGY -SHIELDING EFFECT

So, only the rotating pyramid survived the galaxy-induced "blackout" of December 4, 1979, and somehow *the rotation caused it to eventually harness more energy than all the others*. This was Parr's first realization that *rotating the pyramids could dramatically enhance the strength of energy that they were absorbing and radiating*, as Russian scientists such as Kozyrev had already discovered. For several years he tinkered with various designs to rotate

pyramids, and he also found out that he could strengthen **their energy fields even further by passing them through alternating magnetic fields as they rotated**. This allowed him to reach levels much higher than the 1 to 3 percent shielding for a stationary pyramid. As he reached these higher levels, he also noticed that **there would be a reduction in the weight of objects inside the pyramid as well; gravity was also being shielded**.

9.8.6 “PINCH-OFF” AND HYPERSPACE

Over this time, he calculated that when he could get the pyramids to reach a certain speed while also bathing the surrounding air with atomic particles such as ions, there would be a “pinch-off” where the shielding would reach 100 percent. At this point the pyramid’s energy field would completely shield off all electromagnetic, radioactive and gravitational energy. **Rotation alone could create a 50% shielding effect when the proper speed was attained**, and the atomic particles were required to reach the 100% pinch-off point. Sunlight could also be used as the source of atomic particles to achieve complete shielding in the energy orb.

Obviously, this fits in with our previously stated ideas about objects displacing into higher levels of aetheric density, drawing from the concepts of Dr. Vladimir Ginzburg, Dr. A.M. Mishin and Dr. Harold Aspden. Indeed, it appears that **an object will gradually displace into a higher aetheric density as it vibrates closer to the speed of light**. Eventually, a complete shift can be made into the higher density at that point, and **when the pressure is later released, the object will naturally shift back down into our own density**. This also correlates with the patent of David Hudson, where microcluster iridium was seen to disappear when it was heated up to 850° Celsius, but would reappear when the temperature was reduced.

Therefore, it shouldn’t surprise us that **once the 100% shielding level was attained in Parr’s experiments, the pyramid would temporarily disappear from our known “three-space” reality**. At these times, the pyramids would disconnect from their epoxy mountings on the rotating arm, which was calculated to require 2000 pounds of force, or a sudden increase in kinetic (movement) energy that was *113,000 times greater* than before. In 55 different experiments of this type, the pyramid would pass through solid objects such as the wall of the machine, which formed an enclosed shell that surrounded the path of the pyramid’s rotation. When the pyramid would re-emerge into our own space after passing through the solid casing of the machine, it would be traveling at a tremendous speed like a bullet and often end up embedding itself into the wall of his laboratory or exploding.

9.8.7 SETUP OF EXPERIMENT

Now that we have established that this very anomalous effect would occur, it is good for us to have a better understanding of how this machine was actually constructed. In Parr's setup, a 5-inch thick, 3-foot diameter circular chamber houses a blade that rotates in a propeller-like fashion. The wood blade is 3 inches wide by 1/8-inch thick and swings in a 25-inch diameter circle. At both ends of the arm, two small one-inch base pyramids weighing eight grams each and made of ABS plastic are attached. The points of the pyramid are horizontally aligned with the base, pointing away from the center of the arm. The centrifuge is driven by a 12-volt DC ¼ horsepower motor in the 700-2400 rpm range. As the pyramids rotate, they pass through 36 pairs of magnets arranged in a giant circle, each pair attached just over one inch above and below the path of the pyramids on the ends of the rotating arm. The magnetic pairs alternate between north and south polarity, causing a continuing fluctuation in the fields that the pyramids were exposed to.

As we said, Parr determined that under sufficiently energetic conditions, the interior of the 1-inch wide plastic pyramids would start to shield all known energy fields, whether gravitational, electromagnetic or radioactive. The area inside the bubble surrounding the pyramids would lose weight. Radioactive materials, radio frequency sources and magnetic sources placed inside the small pyramids would be shielded from the outside. When pinch-off is achieved, the pyramids would either self-destruct or travel through solid objects, as indicated. This would also have the effect of causing extensive damage to the rotating arm and the entire inside of the machine.

9.8.8 ENERGY STREAM BETWEEN SUN AND ORION'S BELT

Parr found that this sudden increase of energy leading to pinch-off would occur most reliably every year on Dec. 13-16, and his measurements were taken over a 13-year period. Eventually, Parr discovered that at this time, the Earth's orbital path was intersecting an imaginary line that could be drawn between the Sun and the belt stars of Orion. This led Parr to conclude that an active energy conduit of some sort exists between the Sun and the stars of Orion's belt. This also falls in line with our expectations related to torsion fields, as there will be streams of aetheric energy connecting all the stars together and flowing between them. The closer we are to a star, the stronger the stream will be, and in the case of Orion's belt we have three central stars in close proximity with four other close stars surrounding them in a giant "X" shape. Thus, the shape of the stars in the Orion constellation forms a passive torsion generator in its own right.

9.8.9 ACCELERATION TO AND FROM THE MOON

One of the most interesting findings of Joe Parr comes from his observations of which direction the pyramids would travel in once they achieved pinch-off. Under the following experimental conditions, we should assume that the moon is new, meaning that it is not giving off light. Parr found that **if the rotating chamber for the pyramid was bathed with negative ions, it would accelerate away from the moon. However, if the chamber was filled with positive ions, the pyramid would accelerate towards the moon.** This fits in line with our quantum physics models, where in this case we would see the Earth as if it were a giant atom. A pyramid that is displaced into a higher aetheric density with negative ions will move towards the center of the earth, just as the negatively-charged electron clouds will press towards the center of the atom. Similarly, a pyramid charged with positive ions will accelerate away from the center of the earth, repelling against the negative charge.

9.9 STAN TENEN'S DISCOVERY OF GIZA PYRAMID AS RESONATOR

In a 2000 appearance on the Laura Lee Show, researcher Stan Tenen noted that the Great Pyramid of Giza is built in harmony with the molecular structure of its materials. The vast majority of blocks that make up the pyramid are limestone, which is primarily a calcium carbonate [CaCO₃] crystal. The Great Pyramid was built with **a 51 degree, 51 minute slope angle**, and Tenen pointed out that **the calcium carbonate molecule has an approximately 52-degree angle in its shape.** This is known as a "cleavage angle" and means that when pure calcium carbonate crystals are split, they will tend to split along this 52-degree angle. Therefore, Tenen claims, **the slope angle of the pyramid brings its entire shape into harmony with the molecules of the matter that makes it up.** Tenen knows of no other structure on Earth that fits this pattern. Clearly, such a harmonic connection between "micro" and "macro" would only further enhance the pyramid's effects

REFERENCES:

Golod, Krasnopolovetz, et al. (Russian Pyramid Studies) URL:
<http://www.gizapyramid.com/>

Grebennikov, Victor. *Chapter V: Flight.* (Notes on Cavity Structural Effect, etc.) Translated by Dr. Juri Cherednichenko. URL:
<http://www.amasci.com/greb/greb2.html>

Grebennikov, Victor. *The Mysteries of the World of Insects.* Novosibirsk, 1990.

Grebennikov, Victor. *Sibirskii Vestnik Selskokhoziastvennoi Nauki*, no. 3, 1984.

Grebennikov, Victor. *Pchlovodstvo*, no. 12, 1984.

Nasonov, Yu. V. *Torsion: Experimental investigation of new long-range actions*. URL: <http://www.amasci.com/freenrg/tors/doc17.html>

Parr, Joseph. *The Mystery and Secret of the Great Pyramid*. URL: <http://www.gizapyramid.com/Parr/Index2.html>